



DIVERSITY OF THE LOCAL UNIVERSE

# **Gatalog@Atlas of the LV Galaxies**

**Kaisina E. I., Karachentsev I. D., Makarov D. I.,  
Kaisin S. S.**

**Special Astrophysical Observatory of the Russian Academy of Sciences**

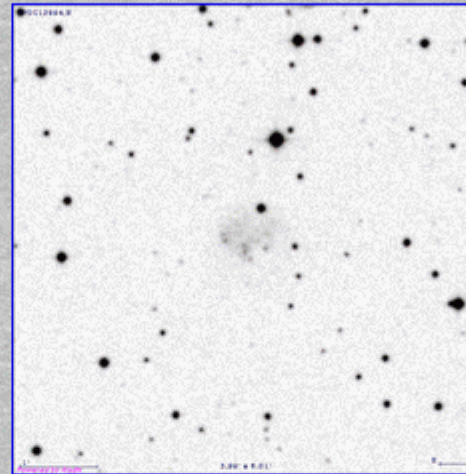
**Nizhny Arkhyz**

**30 September - 4 October 2019**

[Description](#)
[View](#)
[Search](#)
[Tables](#)
[Publication](#)
[Authorization](#)

## Data on the Objects "UGC12894"

Name	R.A.	Decl	$V_h$	$B_t$
EquJ2000.0				
UGC12894	00 00 22.5	+39 29 44	335	16.80



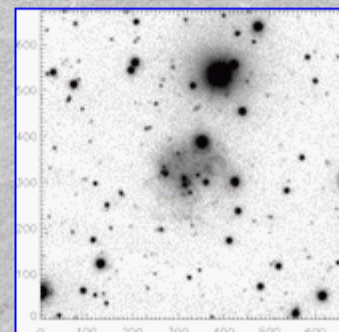
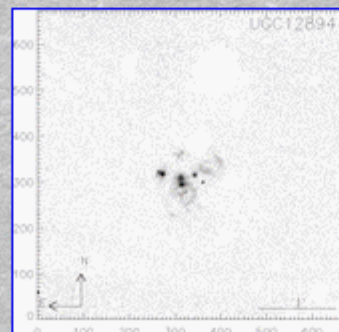
DSS-2 B

Object Names
PGC000035
UGC12894

$a_{Holm}$	$b/a$	$A_B^G$	$m_{FUV}$	$B_T$	$m_{H\alpha}$	$K_s$	$m_{21}$	$W_{50}$	$T$	$T_{dv}$	$V_h$	$D$	Method
1.02	0.87	0.47	17.60	16.80	19.40	14.00 <sup>B</sup>	15.70	34	10	Ir-L	335	8.47	TF

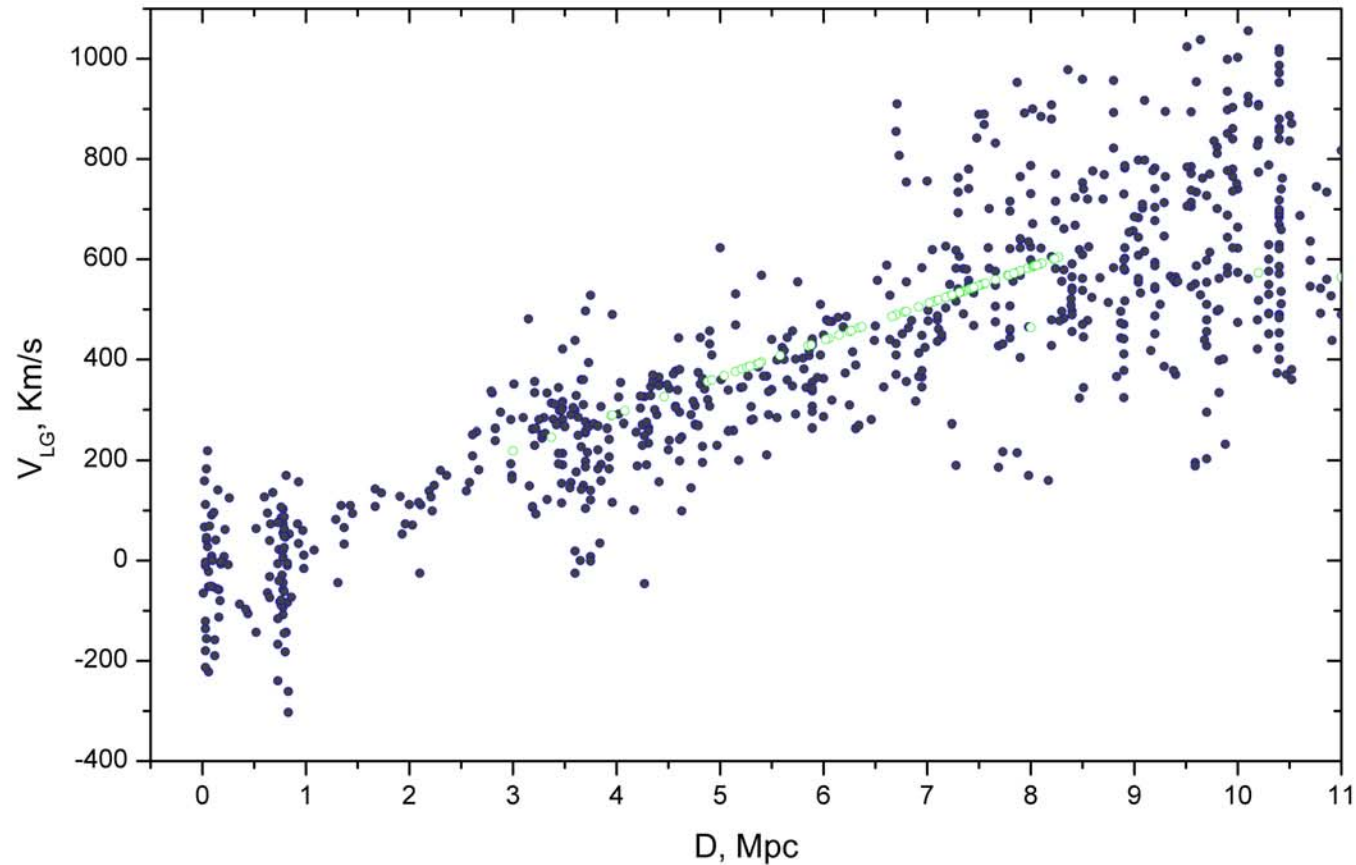
$A_{26}$	$i$	$V_m$	$A_B^i$	$M_B$	$SB_B$	$\log L_K$	$\log M_{26}$	$\log M_{HI}$	$V_{LG}$	$\theta_1$	$\theta_5$	$\theta_j$	MD
2.78	33	21	0.00	-13.31	25.22	7.58	8.17	7.92	619	-1.3	-0.9	0.1	NGC7640

	Flux	$\lg[SFR],$ [ $M_{\odot} \text{ yr}^{-1}$ ]
UV		-2.03
H $\alpha$	$(5.93 \pm 0.15) \times 10^{-14}$ [erg cm <sup>-2</sup> s <sup>-1</sup> ]	-2.29
HI	$(4.97) \times 10^0$ [Jy km s <sup>-1</sup> ]	



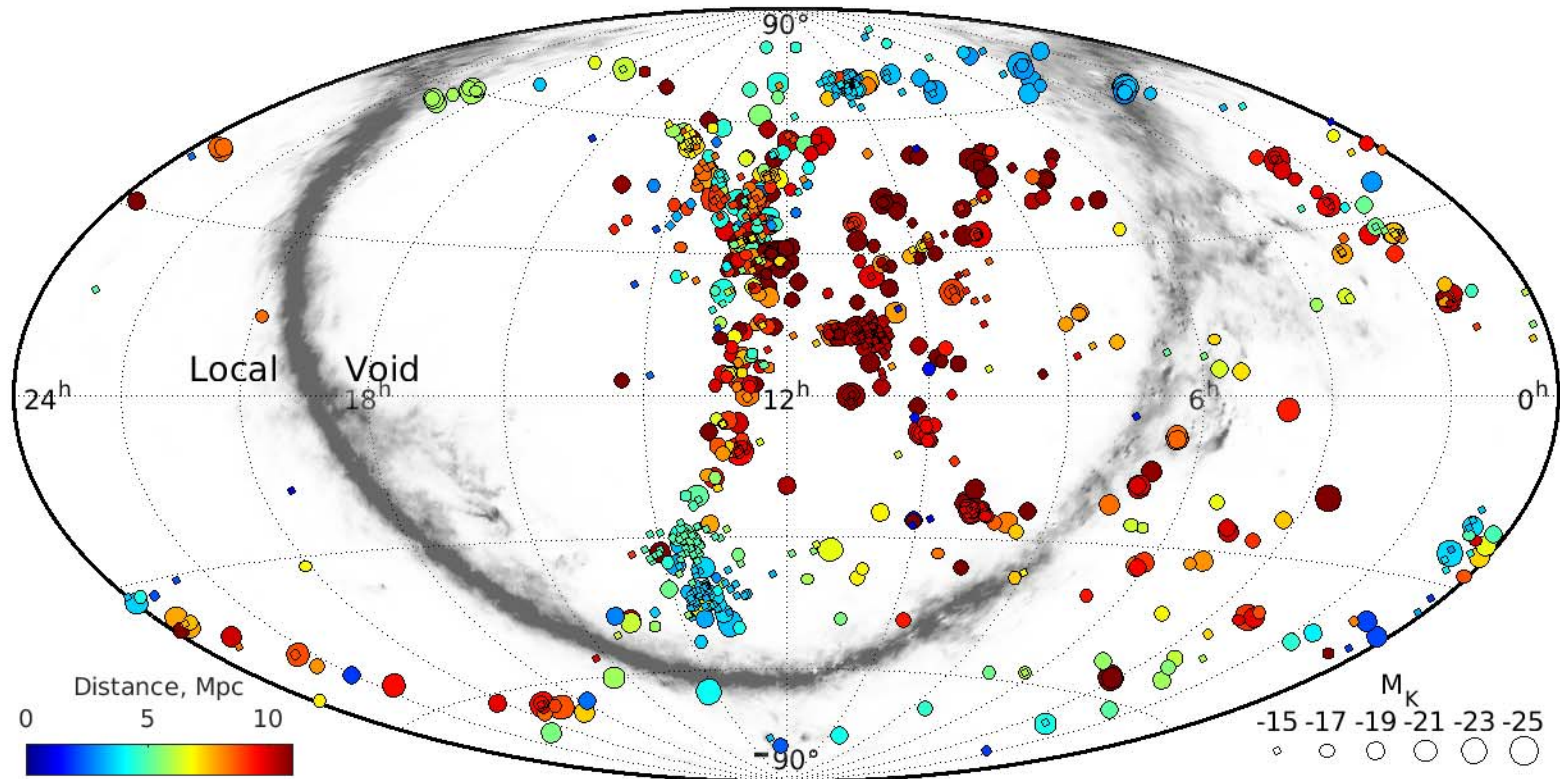
BTA 6-m

# The Hubble flow around the Local Group centroid

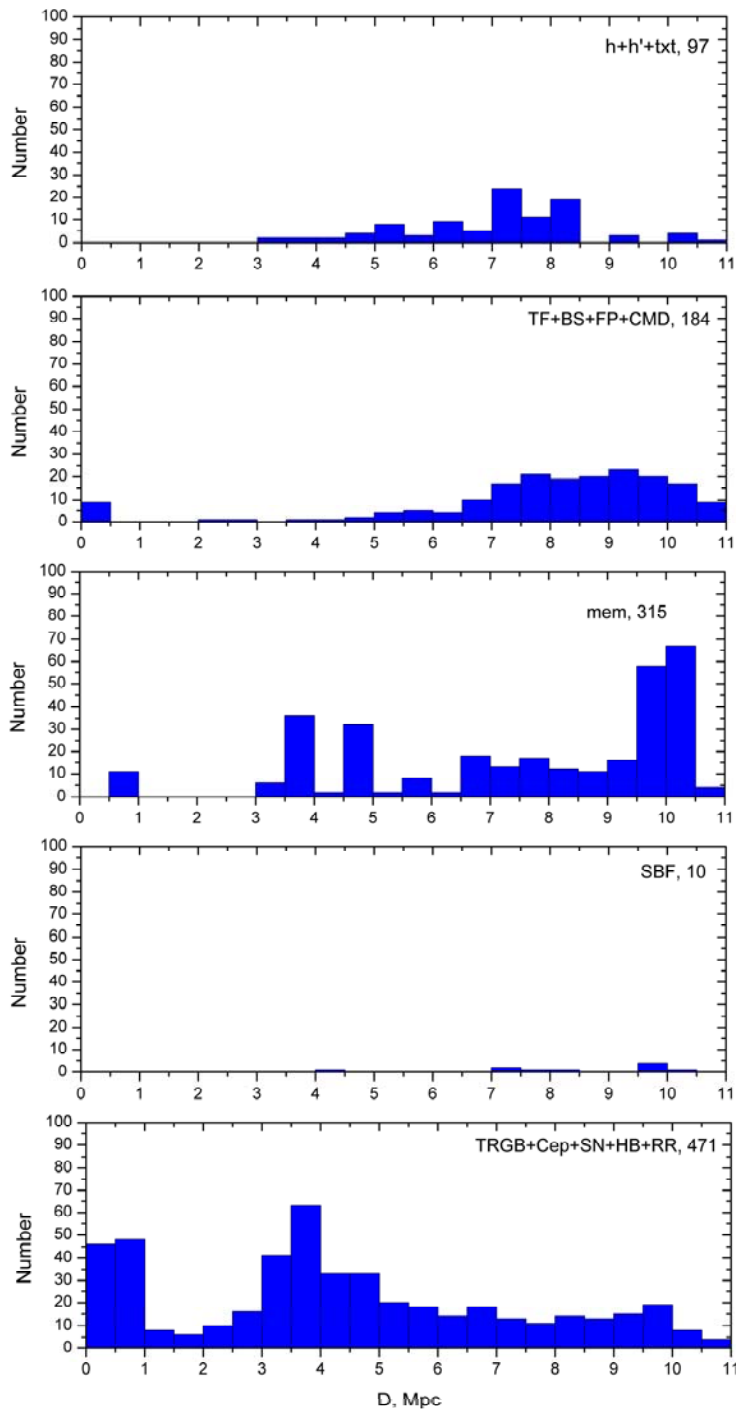




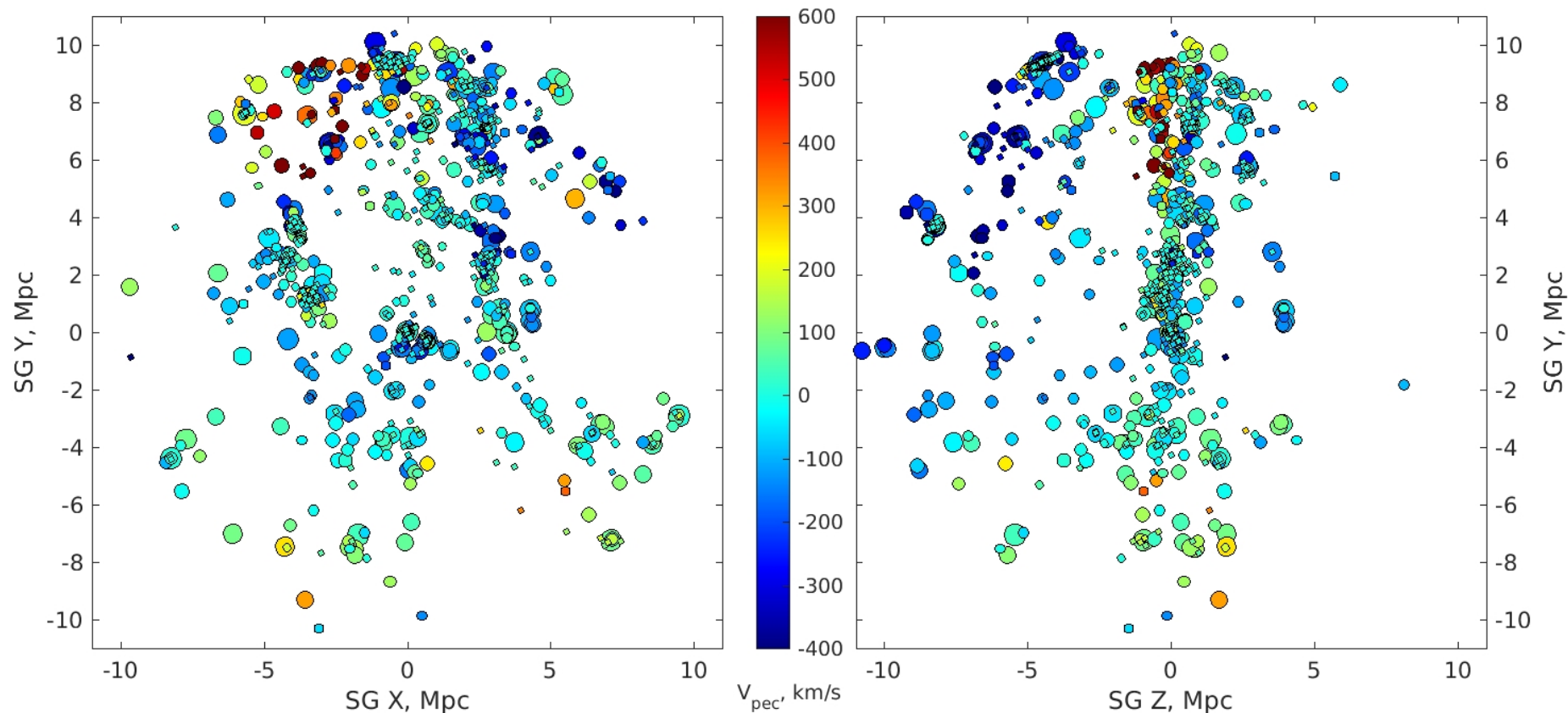
# Distribution of nearby galaxies on the sky in equatorial coordinates



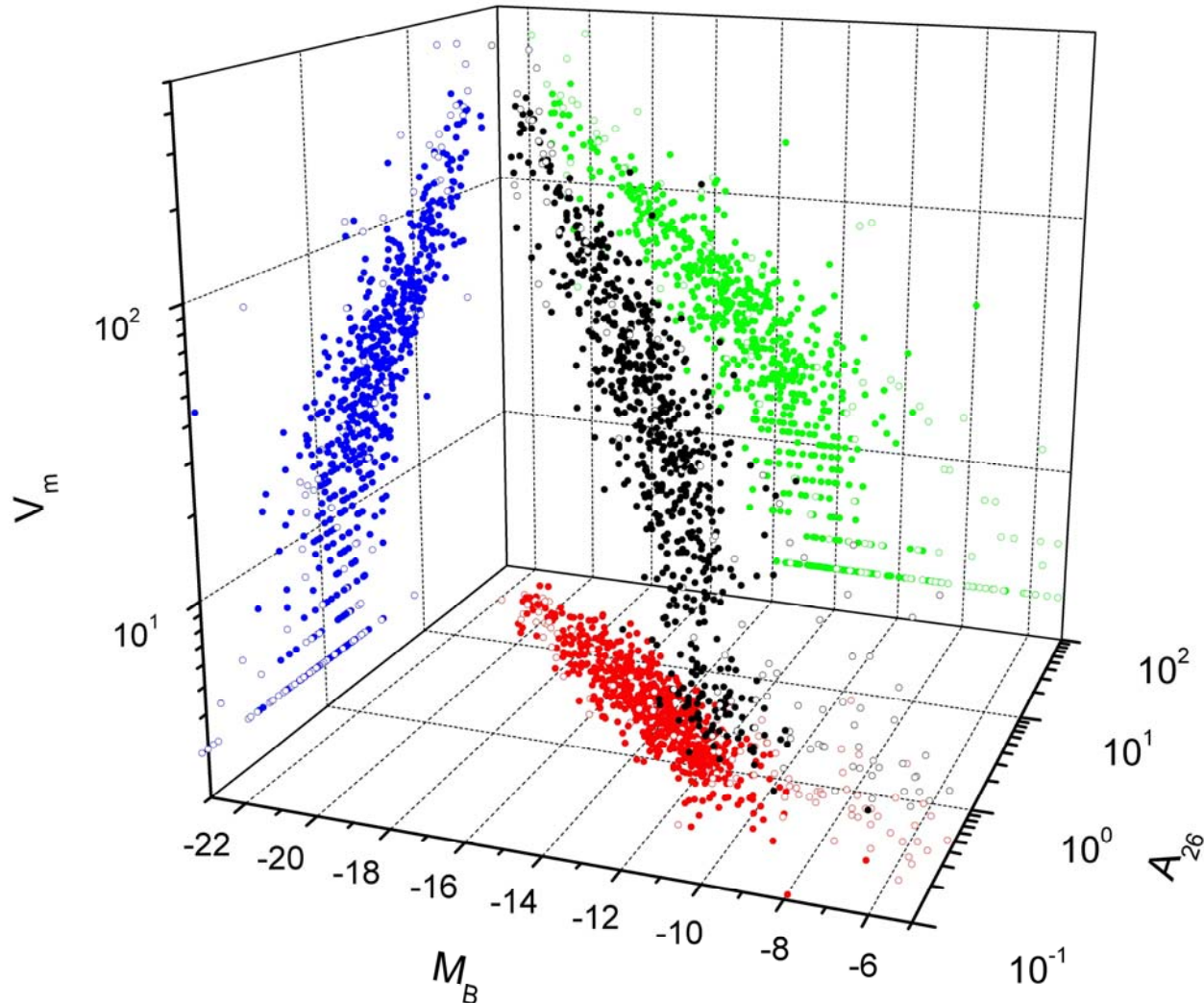
# Distribution of 1077 nearby LV galaxies according to their distance estimates derived by different methods



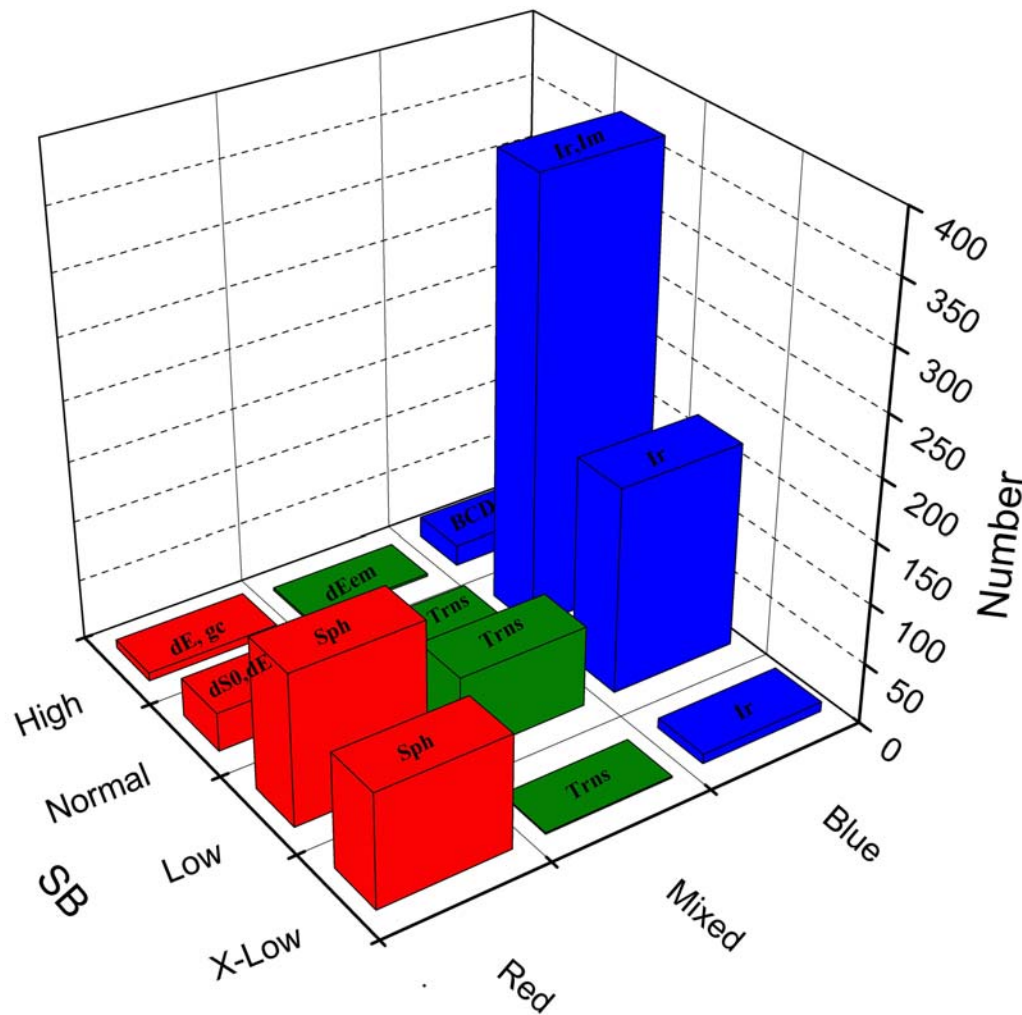
# Distribution of the LV galaxies within 11 Mpc in Cartesian Super-galactic coordinates



# 3-D scaling relation between absolute magnitude, Holmberg diameter and rotation velocity for the LV galaxies



**The classification of dwarf galaxies, according to the classification of dwarf galaxies that takes into account galaxy color or gas content as well as surface brightness (Karachentsev et al., 2013)**







***LVGDB <https://www.sao.ru/lv/lvgdb/>***

*Thank you*

**Classification for dwarf galaxies  
(fainter than LMC or with  $W < 100$  km/s)**

 <b>SB</b>	High	BCD	dEem	(glob. clst) dE RCD
	Normal	BCD Im	dS0em	dS0
	Low	Ir	Ir/Sph Transition	Sph
	X-Low	Ir (HI cld)	Trns	Sph
		Blue		Red
		<b>Color Index</b>	<b>Gas content</b>	

# Distribution of nearby galaxies on the sky in galactic coordinates

